

# CAPPLUS

---

## TECHNOLOGIES

### CPT TD400 II TABLET DEDUSTER

HEAVY DUTY DESIGN  
FOR TABLETS WITH HIGHER DUST LEVELS



#### FEATURES INCLUDE:

- RATED AT UP TO 400,000 TABLETS PER HOUR
- EASY-ADJUST CLEANING CHAMBER ANGLE
- QUIET OPERATION DURING CLEANING
- FDA APPROVED NYLON BRUSH CLEANING SYSTEM
- NO TOOLS REQUIRED FOR DISASSEMBLY
- 1/4 HP VARIABLE SPEED DC DRIVE MOTOR
- ALL STAINLESS STEEL CONTACT PARTS
- COMPACT DESIGN REQUIRING LESS SPACE
- DUAL 1" VACUUM PORTS FOR DUST COLLECTION
- COOLING SYSTEM FOR MOTOR
- MOUNTED ON LOCKING CASTERS
- GEAR DRIVEN

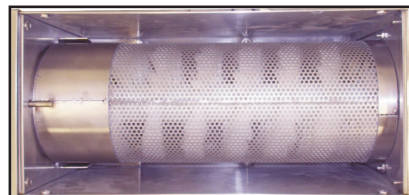
#### SPECIFICATIONS

HEIGHT 44"  
LENGTH 33"

#### ELECTRICAL

MOTOR 40 WATT  
VARIABLE SPEED. 110V/1PH

CLOSE UP VIEW OF DUAL DUST  
COLLECTION PORTS

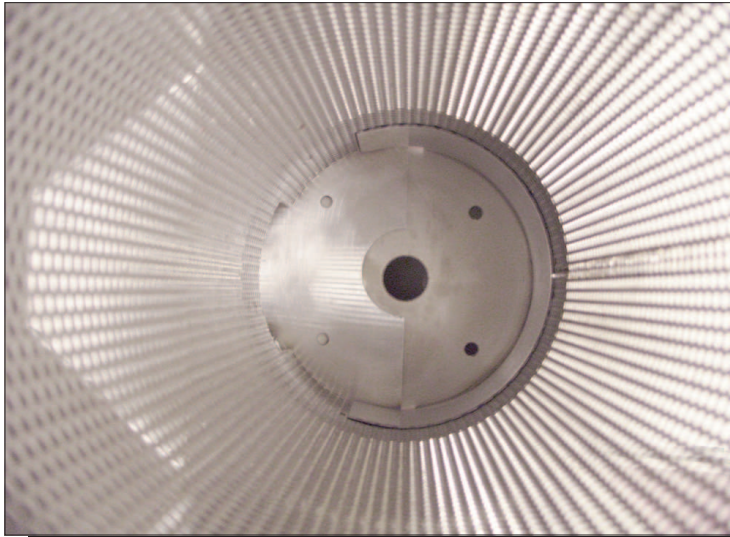


OVERHEAD VIEW OF  
PERFORATED TUBE  
AND BRUSH  
ASSEMBLY

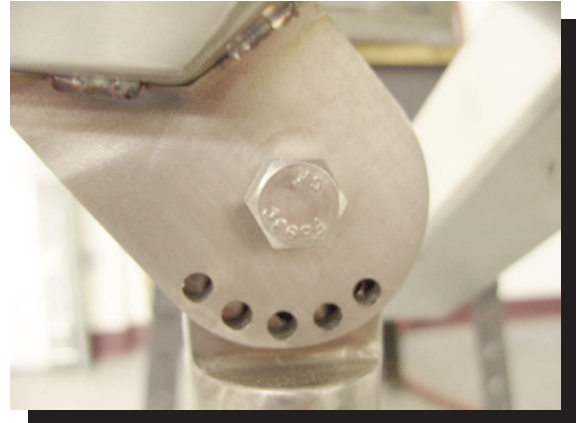
# CAPPLUS

---

## TECHNOLOGIES



INSIDE VIEW OF DEDUSTING CHAMBER



CLOSE UP VIEW OF ANGLE  
ADJUSTMENT BRACKET

STANDARD FEATURES	BENEFITS
FDA COMPLIANT NYLON BRUSHES	CLEANS BETTER THAN VIBRATION. ONE OF TWO BRUSH MACHINES ON MARKET.
COMPACT DESIGN	EASILY ADAPTABLE TO ANY PRODUCTION SETTING
DUAL 1" VACUUM PORTS FOR DUST COLLECTION	REDUCES IRRITATING AIR BORN PARTICLES
USES STANDARD 110V ELECTRIC	NO COSTLY ELECTRICAL CONVERSIONS
RATED AT UP TO 400,000 TABLET PER HOUR	KEEPS UP WITH PRODUCTION EQUIPMENT