

# CAPPLUS

---

## TECHNOLOGIES

---

### CPT TD400 TABLET DEDUSTER



#### FEATURES INCLUDE:

- DE-DUSTS UP TO 400,000 TABLETS PER HOUR
- EASY-ADJUST CLEANING CHAMBER ANGLE
- QUIET OPERATION DURING CLEANING
- FDA APPROVED NYLON BRUSH CLEANING SYSTEM
- NO TOOLS REQUIRED FOR DISASSEMBLY
- ALL STAINLESS STEEL CONTACT PARTS
- COMPACT DESIGN REQUIRING LESS SPACE
- 1" VACUUM PORT FOR DUST COLLECTION
- GEAR DRIVEN

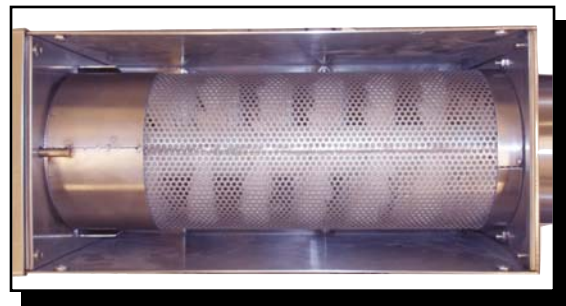
#### SPECIFICATIONS

HEIGHT 44"  
LENGTH 33"

#### ELECTRICAL

MOTOR 40 WATT  
VARIABLE SPEED. 110V/1PH

CLOSE UP VIEW OF  
INLET CHUTE



OVERHEAD VIEW OF PERFORATED  
TUBE AND BRUSH ASSEMBLY

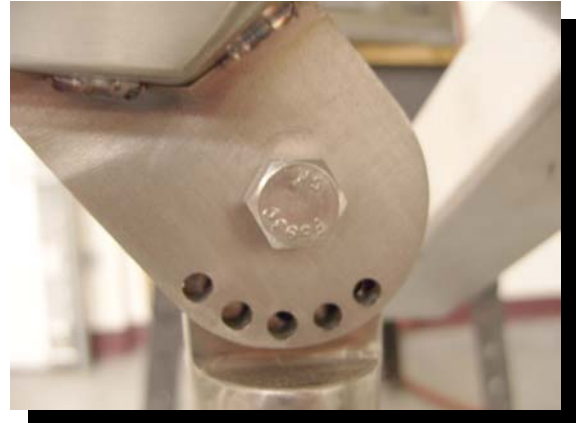
# CAPPLUS

---

## TECHNOLOGIES



INSIDE VIEW OF DEDUSTING  
CHAMBER



CLOSE UP VIEW OF ANGLE  
ADJUSTMENT BRACKET

STANDARD FEATURES	BENEFITS
FDA COMPLIANT NYLON BRUSHES	CLEANS BETTER THAN VIBRATION. ONE OF TWO BRUSH MACHINES ON MARKET.
QUIET OPERATION	WILL NOT ADD ADDITIONAL NOISE TO YOUR TABLETING ROOM
COMPACT DESIGN	EASILY ADAPTABLE TO ANY PRODUCTION SETTING
1/4 H.P. VARIABLE SPEED DC DRIVE MOTOR	WORKS WITH THE ANGLE ADJUSTMENT CRANK FOR MAXIMUM DEDUSTING
1" VACUUM PORT FOR DUST COLLECTION	REDUCES IRRITATING AIR BORN PARTICLES
ALL STAINLESS STEEL CONTACT PARTS	PROMOTES EASE OF CLEANING AND CGMP COMPLIANCE
USES STANDARD 110V ELECTRIC	NO COSTLY ELECTRICAL CONVERSIONS
"EASY ADJUST" ANGLE ADJUSTMENT	EASILY ADJUST DWELL TIME BASED ON THE DEGREE OF CLEANING REQUIRED
RATED AT UP TO 400,000 TABLET PER HOUR	KEEPS UP WITH PRODUCTION EQUIPMENT
TOOL-LESS CLEANING AND MAINTENANCE	ALLOWS OPERATOR TO CLEAN AND MAINTAIN MACHINE WITH MINIMAL EFFORT