

CAPPLUS

TECHNOLOGIES

Capsule Checkweigher

When weighing every capsule is a must!

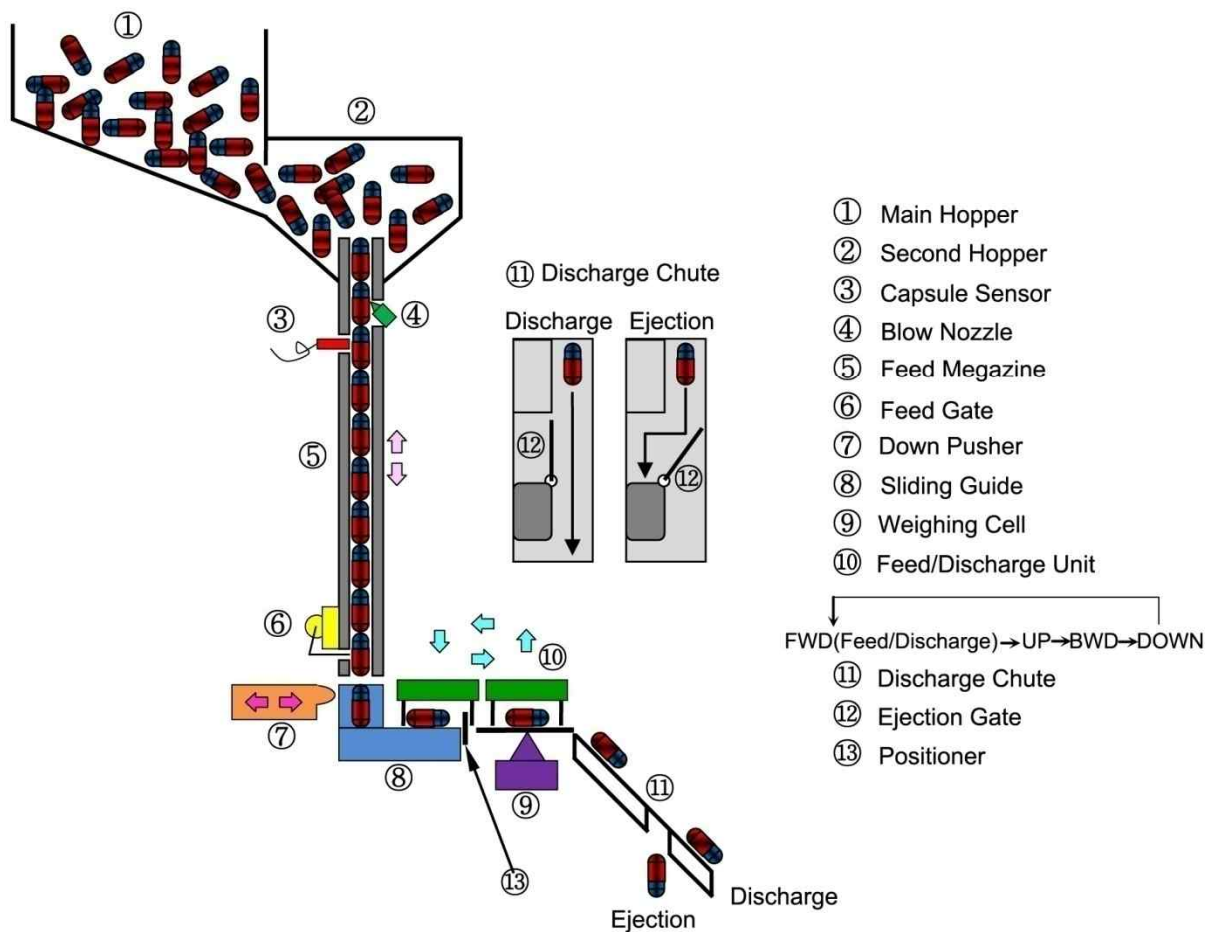


**Accuracy Assurance
With High Operation Speed
Up To 120,000 Capsules Per Hour**

22505 N. 18th Dr., Phoenix, AZ 85027 | PH: 623-582-2800 | Fax: 623-582-4099
www.capplustech.com

◆ PROCESSING

Accuracy of weighing is ensured with precision sorting in high operation speed.



CapPlus Technologies

22505 N. 18th Dr., Phoenix, AZ 85027 | PH: 623-582-2800 | Fax: 623-582-4099

◆ DESIGN FEATURES

▪ Trouble Free Feeding

- The secondary hopper is equipped with photoelectric sensor for the control of product level and jamming.
- In every feed lane, an air nozzle is installed. It triggers an air injection that prevents product jamming.
- A fiber optic sensor is installed to monitor capsule flow in the magazine.
- A capsule stopping device keeps capsule in the weighing position even in high speed operation.



▪ Accuracy Assurance

- A weighing cell is seated higher than weighing pan, resulting in minimized dust influence.
- Empty space is maintained below the weighing pan, eliminating any chance of dust accumulation.



▪ Precise Sorting

- Ejection gate on discharge chute.
- Two collection containers for good and bad capsules.



▪ Simple Size Change-over

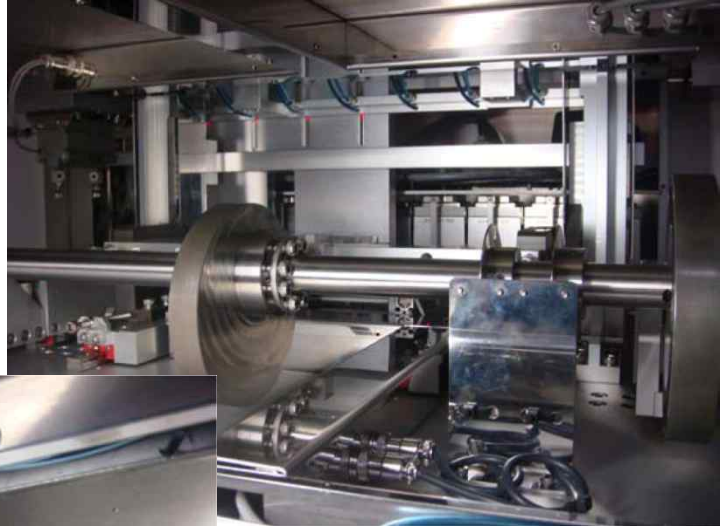
- Change-over of three parts; magazine, sliding guide and feed/discharge unit.
- Modular design of capsule magazine.

CapPlus Technologies

22505 N. 18th Dr., Phoenix, AZ 85027 | PH: 623-582-2800 | Fax: 623-582-4099

▪Dust Resistance

- Electric cables are guided in ducts and connected with sealed sockets to eliminate dust contamination.
- Minimized dust influence to weighing cells.



▪Convenient Cleaning

- Electric cables and air lines are sealed for easy cleaning.
- Swing doors on 3 sides allows easy access.
- An air cleaning nozzle, is controlled via the touch screen.
- Auto air injection is provided in the weighing area prior to auto tare at the time of start-up.

CapPlus Technologies

22505 N. 18th Dr., Phoenix, AZ 85027 | PH: 623-582-2800 | Fax: 623-582-4099

◆WEIGHING SYSTEM

■Weighing Cell

- Analytic precision weighing cell, **magnetic suspension balance**.
- Setting of automatic tare cycle.
- Dust & water proof (IP65).
- Built-in shock absorber

■Accuracy & Weighing Range

- Weighing Span: 2mg
- Weighing Range: 20mg 2,000mg

■High Speed Operation

- Model 'PrecisCAP08060': Max. 60,000 capsules/HR
- Model 'PrecisCAP12090': Max. 90,000 capsules/HR
- Model 'PrecisCAP 16120': Max. 120,000 capsules/HR

■Automatic Diagnosis & Tare

- Automatic diagnosis of control board and weighing system at the time of start-up.
- Regular automatic tare as per cycle setting.

■Validation

- Test of 60 capsules per lane.
- Statistical calculation, data saving and printing.
- Individual weight verification with the data.



CapPlus Technologies

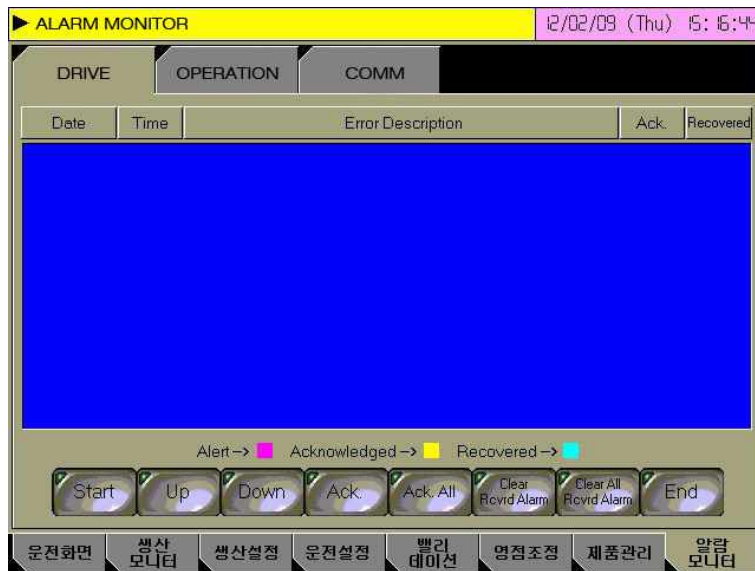
22505 N. 18th Dr., Phoenix, AZ 85027 | PH: 623-582-2800 | Fax: 623-582-4099

▪Alarm

- Lower capsule level in secondary hopper.
- Drive motor trouble.
- Lower air pressure
- Capsule jamming in the secondary hopper.
- Capsule clogging in feeding magazine.
- End of operation (as per target setting).
- Trouble from control board or communication board.
- Printing trouble, no paper or paper jam

▪Report Print

- Set-up data
- Total output
- Excess of output
- Less output
- Quantity of good capsules
- Distribution of weight



```

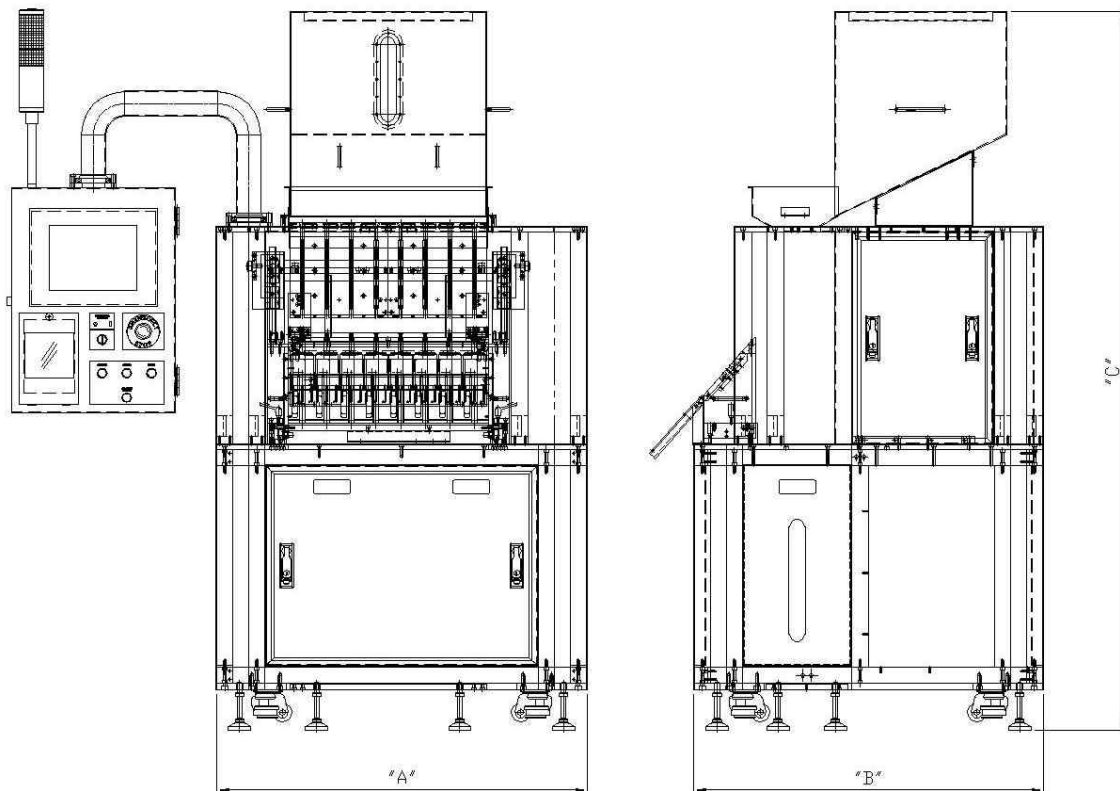
***** LANE03--VALIDATION DATA *****
                                2012.02.08 12:30--12:31
Product name                      DAEBONPTS678
Batch no.                          0123
Lot no.                             0987
Sampling no.                        060
+NG                                  006
Pass                                 036
-NG                                  018
Total weight                       042.091g
Mean vale                          0701.51mg
STD. DEV.                          50.04mg
C.V.                                07.13%
MAX. VAL.                          0830mg
MIN. VAL.                          0611mg
REF. VAL.                          0680mg
Upper limit                         90mg
Lower limit                         10mg
+NG                                  006
+90                                  009
+66                                  004
+45                                  011
+22                                  010
-02                                  000
-05                                  002
-06                                  000
-10                                  000
-NG                                  018
***** END *****

```

◆ TECHNICAL DATA

MODEL	PrecisCAP08060	PrecisCAP12090	PrecisCAP16120
No of Lane	8	12	16
Max. Output	60,000[Capsules/hr]	90,000[Capsules/hr]	120,000[Capsules/hr]
Applicable Size	000, 00, 0, 1, 2, 3, 4, 5		
Weighing Span	+/-2[mg]		
Weighing Range	20 ~ 2,000[mg]		
Auto Tare Cycle	1 ~ 60 (minutes)		
Air Condition	Temperature : 20°C±4°C, Humidity : 50%R.H.±20%R.H.		
Contact Parts	Stainless steel, Aluminum hard-coated (FDA-compliance)		
Power Requirement	220V – 1PH – 60HZ (Max. 1.5KVA)		
Dimension[mm]	Approx. A:900 B:850 C:1650	Approx. A:900 B:850 C:1650	Approx. A:1100 B:850 C:1650
Weight[Kg]	Approx. 600	Approx. 750	Approx. 900

◆ LAYOUT



CapPlus Technologies

22505 N. 18th Dr., Phoenix, AZ 85027 | PH: 623-582-2800 | Fax: 623-582-4099